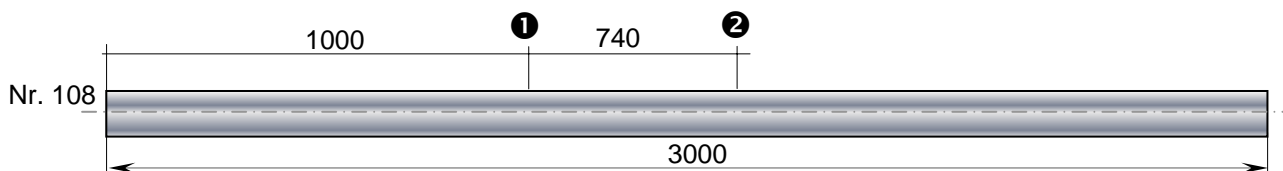


Customer:	<i>Bosch</i>	Steel grade:	<i>Böhler N114</i>
Heat treatment	<i>geglüht</i>	Dimension:	<i>ø 30,5 x 3000 mm</i>
Surface cond.:	<i>ECOFINISH</i>	No. of steps:	<i>see sketch</i>
Procedure:	<i>AV2/1181/76 Rev. 1; AV2/36/5060/70 Rev. 0</i>	Specification:	<i>---</i>

Attention: Sketch is not true to the measure!!



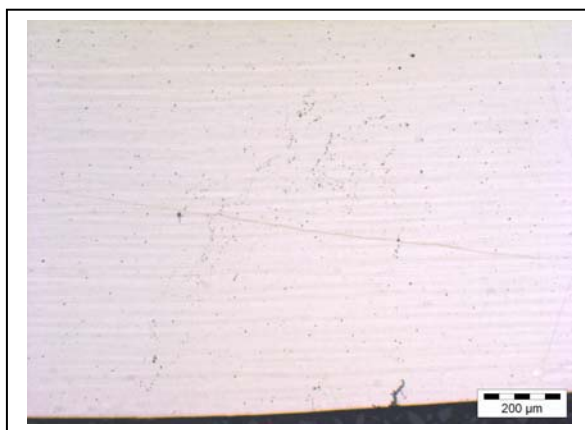
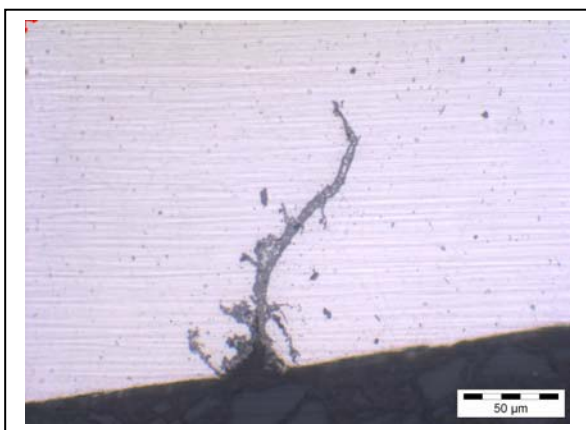
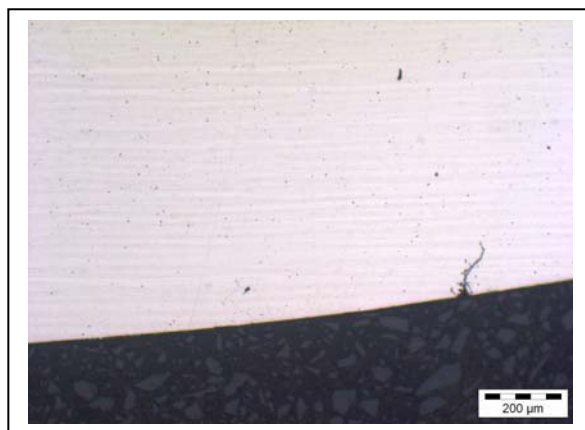
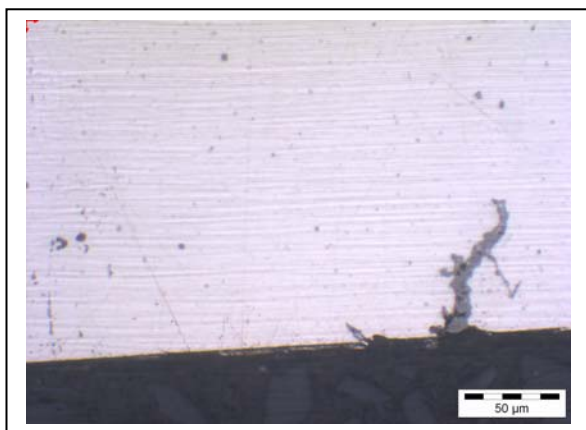
①	Nut 0,1 mm Breite x 0,1 mm Tiefe x ~ 30 mm Länge
②	Natürlicher Fehler mit 20 mm Länge, Vergleichsuntersuchung an zweiten typengleichen Schlechtstab ergab 0,15 mm Fehlertiefe (siehe Seite 2)

Remarks:

Customer:	<i>Bosch</i>	Steel grade:	<i>Böhler N114</i>
Heat treatment	<i>geglüht</i>	Dimension:	<i>ø 30,5 x 3000 mm</i>
Surface cond.:	<i>ECOFINISH</i>	No. of steps:	<i>see sketch</i>
Procedure:	<i>AV2/1181/76 Rev. 1; AV2/36/5060/70 Rev. 0</i>	Specification:	<i>---</i>

Metallographische Fehleruntersuchung aus Chg. P70389
 Marke N114, Abmessung: ø 30,5 mm,

Beide Proben zeigen verzunderten Anriss max. 0,15 mm



Remarks: